

# ANNUAL REPORT 2015-2016 SOUTH AUSTRALIA



## OUR WORK IN 2015-2016



**84,847**

**SOUTH  
AUSTRALIANS  
ASSISTED  
EVERY  
MONTH**



**26,877**

**ALMOST  
ONE THIRD  
ASSISTED  
EACH MONTH  
ARE CHILDREN**



**4.3M**

**DISTRIBUTED  
ENOUGH FOOD  
FOR OVER  
4.3 MILLION  
MEALS**



**520+460**

**SUPPORTED  
520  
AGENCIES  
AND 460  
SCHOOLS**



**1,349,141**

**1,349,141KG  
OF FOOD  
SAVED  
FROM  
LANDFILL**

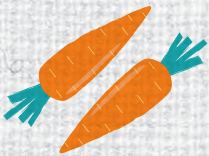


**38,222**

**38,222  
HOURS OF  
VOLUNTEER  
WORK**



# “ FOODBANK IS THE LARGEST FOOD RELIEF ORGANISATION IN AUSTRALIA ”



**\$1**

**ENABLES US TO DISTRIBUTE \$8 WORTH OF FOOD AND GROCERIES TO CHARITIES AND SCHOOLS.**



**\$2**

**ENABLES US TO PROVIDE A MEAL FOR A FAMILY OF FOUR.**



**58%**

**FOODBANK ACCOUNTS FOR 58% OF THE FOOD DISTRIBUTED TO CHARITIES BY FOOD RESCUE ORGANISATIONS.**



**1/10**

**EACH YEAR TWO MILLION AUSTRALIANS SEEK FOOD RELIEF - AROUND HALF OF THEM CHILDREN.**



**7,210**

**DESPITE OUR EFFORTS, 7,210 SOUTH AUSTRALIANS ARE UNABLE TO BE ASSISTED EACH MONTH. MORE THAN 1/3 OF THEM ARE CHILDREN.**



# OUR KEY AREAS OF WORK

## CORE STAPLES

Sourcing Core Staples is the basis of Foodbank's work. Core staples are the items that everyone should have in their pantries. Those long-life shelf products that we all grew up with would include: baked beans, rice, pasta, pasta sauces, breakfast cereal, long life milk, tinned fruit and veggies. We source our Core Staples through a number of different ways:

- our relationship with the local and national food industry, retailers and producers enables us to get **donations**
- individuals, schools and workplaces run **Food Drives**
- **cash donations** from companies and community groups which are used to buy much needed staples
- a nation-wide **Key Staple Program** puts together a number of different companies to manufacture specific products

On top of that we buy a considerable number of items at discounted rates to make sure that we are able to offer healthy and nutritious food to those who otherwise would go without.

## COMMUNITY FOOD HUBS

We developed the Food Hubs to provide those who are in need with a dignified experience of visiting a general store environment that offers choice and provides much greater value for money. Individuals are assessed by welfare partners who issue them with a voucher.

This voucher allows them to access and shop at our Foodhubs in Bowden, Edwardstown, Elizabeth and the community-managed Foodhub in Port Pirie.

**ON AVERAGE,  
120 CLIENTS VISIT OUR  
FOOD HUBS EVERY DAY**

## SCHOOLS

When you are hungry, you can't be at your best. Going to school hungry affects a child's ability to concentrate, to learn and to achieve. This can lead up to dire consequences throughout their lives. A key area of Foodbank's work is to source and acquire food items to support 460 School Breakfast Programs across Adelaide's metro, regional and country areas. Common items available are breakfast cereal, long life milk, Spreads like jam and Vegemite, tinned and fresh fruit and yogurt. Foodbank delivers food to schools in all regions of SA, and also provides food to other charities for their breakfast programs.

**460 SCHOOLS**

## FRUIT AND VEG FOR ALL

At Foodbank's Fruit & Veg Centre at the South Australian Produce Market we source donations from fresh produce wholesalers to distribute via our warehouses and foodhubs. We go even further by nurturing relationships with growers and packing sheds in the Riverland, Adelaide Hills and Virginia regions to source produce straight from the farm. At Foodbank, fresh produce is distributed at no charge. In 2015/2016, more than 700,000 kg of local fruit & veg came through our doors straight to welfare agencies, community kitchens and schools. Our aim is to expand the Fruit & Veg program to provide 1 million kilos of Fruit & Veg to those in need each year.

**MORE THAN  
700,000 KG OF FRUIT  
& VEG DISTRIBUTED AT  
THE SOUTH AUSTRALIAN  
PRODUCE MARKET**

## COUNTRY AND REGIONAL OUTREACH

South Australia's extensive geographic area poses some logistical and operational challenges to reach those in rural and outback communities that need food relief services. Our regional branches in Mount Gambier, Berri and Whyalla support their respective regions. We also supply the stock for a regional food hub in Port Pirie.



## A WORD FROM...

### Simon Schrapel Foodbank SA Chair

When times are tough it has been organisations like Foodbank SA which have come to the fore to ease the pressure on those in need. With the generous support of our food donors and supporters and through an army of frontline welfare agencies Foodbank SA continues its pivotal job of getting food relief to those who need it most.

South Australia continues to experience uncertain economic conditions with major transformations to our industry and commercial sectors and impacts on our workforce. These challenges, manifesting in persistently high unemployment and under-employment rates are making life tough for many South Australians. Combined with rising cost of living pressures Foodbank SA knows just how difficult it is for many South Australian households to get by and pay their bills. It is these conditions which are driving increasing numbers of South Australians to seek help, including emergency assistance in the form of food relief.

This is why the work of Foodbank SA is so important to our community.

We have continued to strive to find new ways of both procuring more food and the means to distribute it to regions and agencies where people can access it. Our aim will continue to be about ensuring that every South Australian who is in need of food relief can benefit from the work of Foodbank SA. It is why we have continued to build our network of food hubs

and further cemented our partnership with the South Australian Produce Market to procure more fresh fruit and vegetables. It is also the reason we have extended our school breakfast program to reach more South Australian schools and students over the past year and why we were delighted to secure, with the generous support of the South Australian government, ownership of our Foodbank outlet in Whyalla – a community undergoing significant economic transition.

Foodbank SA continues to be served by a Board whose members give generously of their time to not only ensure the effective governance of Foodbank SA but who roll up their sleeves in supporting our fundraising, food procurement and promotional activities. We are also fortunate to have such strong and passionate leadership through our CEO Greg Pattinson and an enormously talented and dedicated group of staff and volunteers across our state-wide network of warehouses and outlets.



“  
**OUR OUR AIM WILL  
CONTINUE TO BE  
ABOUT ENSURING  
THAT EVERY SOUTH  
AUSTRALIAN WHO  
IS IN NEED OF FOOD  
RELIEF CAN BENEFIT  
FROM THE WORK OF  
FOODBANK SA.**  
”

## Greg Pattinson Foodbank SA Chief Executive

In 2015/16, Foodbank SA continued its mission to get the "most food to the most South Australians in need in the most efficient way". The organisation consolidated its position as the predominant food rescue and food relief agency in SA, and continued to implement strategies to achieve the objectives established in our strategic plan.

Regrettably, demand for Foodbank's services has never been higher. The Foodbank Hunger Report 2016 showed that over 80000 South Australians are now seeking food assistance every month, one third of which are children. This represents a 50% increase since the last published report in 2014. While Foodbank cannot solve the issues that create this need, we are determined that food should be readily available to assist those affected to get back on their feet. However Foodbank's role in providing food to the 520 welfare agencies and community groups in SA is becoming increasingly difficult as these agencies struggle with reduced funding from all levels of government.

### Some highlights of the past year include:

- Over 2.1 million kg of food distributed, 4% more than the previous year
- Increased support from the SA food industry with a 21% increase in food donated over last year and a number of new donors
- Over 700,000kg of fresh fruit and vegetable donated through our partnership with the South Australian Produce Market

- Opening of our fourth Food Hub at the Anglicare Mission at Elizabeth
- A reduction in the average handling fees charged to clients
- School breakfast programs delivered to over 460 schools in SA, either directly through Foodbank or through client agencies such as the Red Cross and Kickstart for Kids
- Successful winter food drive run at all Westfield shopping centres gained over 8 tonne of food
- Continuation of Pop Up Foodbank program, with events held in Gawler, Adelaide, Aldinga, and Angle Park
- Ongoing corporate sponsorship support from BHPB, IKEA, Energy Australia and the Port Adelaide Football Club
- A major grant was received from the SA Government which allowed Foodbank to purchase a permanent warehouse in Whyalla

Our focus for the next year will be to increase our fundraising capabilities and to ensure that the organisation has ongoing and diverse revenue streams to fund its operations.

None of the achievements above would have been possible without the help and contribution of our volunteers. In 2015/16, Foodbank utilised over 38,000 manhours of volunteers in all areas of our business, from warehousing and deliveries through to marketing and event management.



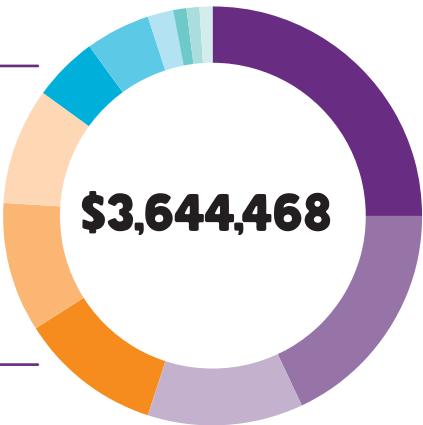
On behalf of the staff and board of Foodbank SA I would like to express our sincere gratitude to this amazing group of people, and I look forward to working alongside them to continue to help those in need in SA.

**“  
NONE OF OUR  
ACHIEVEMENTS  
WOULD HAVE BEEN  
POSSIBLE WITHOUT  
THE HELP AND  
CONTRIBUTION OF  
OUR VOLUNTEERS.  
”**

# FINANCES AND GOVERNANCE

## REVENUE

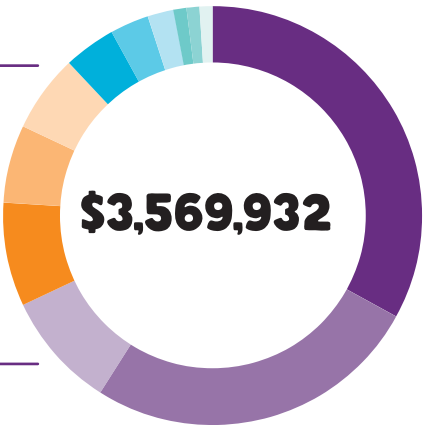
- |   |                                       |
|---|---------------------------------------|
| ■ Handling Fees – Operating Income 25%  | ■ Handling Fees – Everyday Hampers 5% |
| ■ Handling Fees – Staples 18%           | ■ Rental Income 4%                    |
| ■ Donations for Operating Purposes 12%  | ■ Sponsorship 2%                      |
| ■ Handling Fees – Christmas Hampers 11% | ■ Work for the Dole Program 1%        |
| ■ Grants for Capital Purposes 10%       | ■ Fundraising Income 1%               |
| ■ Grants for Operational Purposes 9%    | ■ Agency Delivery Charges 1%          |



For full audited results provided by PriceWaterhouseCoopers, visit [www.foodbanksa.org.au](http://www.foodbanksa.org.au)

## EXPENDITURE

- |  |                                    |
|--|------------------------------------|
| ■ Employee Remuneration – Operating 33%      | ■ Utilities 4%                     |
| ■ Food Procurement 26%                       | ■ Property Rental and Outgoings 3% |
| ■ Other Expenses 9%                          | ■ Freight 2%                       |
| ■ Warehouse Operating Expenses 8%            | ■ Levies 1%                        |
| ■ Employees Remuneration – Administration 6% | ■ Interest Paid <1%                |
| ■ Depreciation 6%                            | ■ Fundraising Expenses <1%         |



Port Adelaide Football Club vs Essendon Football Club



Opening of the Northern Community Food Hub in Elizabeth – October 2015

# OUR BOARD

**Simon Schrapel**



Chairperson,  
Governance Committee

**John Hood**



Vice Chairperson, Treasurer,  
Governance & Finance Committee

**The Hon. Dean Brown AO**



Governance Committee

**Peter Joy**



Fundraising Committee

**Brian Leckie**



Chairperson, Riverland Foodbank

**Ray Tanner**



Operations Committee

**Allison Giotis**



Finance Committee

**Caroline Rhodes**



Governance Committee,  
Fundraising Committee

**Philip Morton**



Fundraising Committee

**Our Patron**



His Excellence The Honourable  
Hieu Van Le AO

## Contact us

Telephone 08 8351 1136  
377A Cross Road Edwardstown  
South Australia 5039

[foodbanksa.org.au](http://foodbanksa.org.au)

# HELP FUND OUR WORK

YES, I AM  
JOINING THE  
FIGHT AGAINST  
HUNGER IN  
SOUTH AUSTRALIA.  
I'D LIKE TO  
DONATE BY...

PLEASE RETURN THIS FORM TO:  
Foodbank South Australia, PO BOX 40, Edwardstown SA 5039

☐ Direct Deposit

Bank: ANZ  
Account Name: Foodbank SA  
BSB: 015 010  
Account No: 349421596  
  
Please leave a reference of your name/business name in the narrative so we can issue a donation receipt

☐ Credit Card

☐ Visa☐ Mastercard

Card Number  

Expiry /

☐ Cheque / Money Order Enclosed

(Addressed to Foodbank South Australia)  
  
Donation Amount  
  
Date

TitleFirst NameLast Name

Address

Post Code


EmailPhone

My gift is from a business - please make receipt out to

Signature

Your privacy is important to us. If you do not wish to receive further information from us please pick the box ☐





**"I HAD NO IDEA  
HOW I WOULD  
BE FEEDING  
MYSELF AND MY  
SICK DAUGHTER  
WITHOUT  
FOODBANK."**

FOOD HUB CLIENT

**"I REMEMBER IN THE FIRST FEW  
WEEKS WHEN I STARTED, I WENT  
HOME WITH TEARS IN MY EYES.  
TO BE CONFRONTED WITH THE  
THOUGHT OF OTHER CHILDREN  
BEING HUNGRY; IT GOT TO  
ME. IT'S GOOD TO BE ABLE TO  
CONTRIBUTE TO SOMETHING  
THAT HELPS OUT THOSE KIDS."**

NEIL STRATFOLD (STRATTY),  
FOODBANK VOLUNTEER

**"WE ARE INDEBTED TO FOODBANK'S  
SERVICES AND THEIR NOBLE  
EFFORTS AS A RESULT OF WHICH  
CARING FOR LIFE NOW EASILY  
MEETS ITS UNIQUE OBJECTIVE OF  
PROVIDING QUALITY VEGETARIAN  
MEALS TO ADELAIDE'S NEEDY AND  
THE HOMELESS. WHAT SEEMED AN  
INSURMOUNTABLE CHALLENGE IS  
NOW A BLISSFUL LABOUR OF LOVE."**

CARING FOR LIFE

**"JUST WANTED TO TELL YOU ALL  
HOW MUCH I APPRECIATE ALL  
YOUR HARD WORK SO THAT THOSE  
OF US THAT ARE STRUGGLING CAN  
FEED OURSELVES."**

FOOD HUB CLIENT



## DONORS, SPONSORS AND VOLUNTEERS

We would like to acknowledge and sincerely thank the following companies, individuals and organisations that joined the fight against hunger in South Australia. For a complete list, please visit [www.foodbanksa.org.au](http://www.foodbanksa.org.au)

### Food Donors

4 Ways Fresh Produce	Caravolo Orchards	Hood's Earth Produce	Mercurio Bros	Peters Ice Cream	Steve's Organics
A2 Milk	Coca-Cola Amatil Pty Ltd	Hussey & Co	Merenda Wholesalers Adelaide	Plant Based Foods	Stramare Produce
Adelaide Convention Centre	- SPC Ardmona	IGA Distribution	Metcash Food & Grocery	Pogas Produce	Sunbeam Foods
Adelaide Produce Markets Ltd	Coles - Edinburgh DC	IGA Foodland Stores	Pty Ltd	Premier Fruits	Sundrop Farms
Agri Exchange/Costa Exchange	Coles - Stores	IKEA	Mildura Fruit Company	Primo Smallgoods	Swanport Harvest
Aldi	Collins Court Butcher (DON)	Jammal Produce	Moffatt Fresh Produce	Pt Lincoln Tuna Processors	TC Luong
Almondco Australia Ltd	Comfresh Marketing	Jasol	Mondelez - Cadbury	R Lamattina & Sons	The Better Drinks Co. Pty Ltd
Antonio Palena	Comit Farm Produce Pty Ltd	Jim Giahgias	Mondello Farms	R. W. Sparkes	(formerly Charlie's Group)
Arnot's Biscuits Ltd	Coonawarra Fresh Produce	Kellogg (Aust) Pty Ltd	Montague Fresh	Rainbow Fresh	The Chicken Before the Egg
Asaleo	Costa	Kimberly-Clark Australia	Mulga Organics	Rand Transport	The Reject Shop - Arndale
Australian Garlic Producers	Costco	Pty Ltd	Mulgowie Farming Company	Rinoldi	Thomas Foods International
Australian Produce Collective	D & T Efroninis	LaManna Group	Murray Goulburn	Riverland Sunfresh Pty Ltd /	Fresh Produce
B&F Distributors	D.E. Coffee & Tea	Lenswood Cold Stores	Nashly Pty Ltd	Sourtzis Group	Tim Grieger
Bache Bros	DSA Fresh	Co-op Ltd	Nestle Australia Ltd	Robert Gilles	Toll Express
Baker's Delight	D'VineRipe	Linfox	(Uncle Tobys)	Royal Adelaide Show Food	TTH Do Pty
BettaLife Distributors	Farmhouse	Lion (Berri & Pura)	Nevana Fine Pastries Pty Ltd	Drive	Tucker's Natural
Bickford's Australia	Ferrero Australia	Lions Club - Mt Gambier	Neways	Russo Produce	Unilever (SA)
Big River Products	Fonterra Australia	Lochert Bros Pty Ltd	Nippy's Fruit Juice Pty Ltd	SA Mushroom	Venus Citrus / P Costi & Sons
Biological Services	Fruit O Rama	Lowana Fruits	Nunga Produce	SA Potato Co	Wild n Fresh
Blue Lake Milling Pty Ltd	Gaganis Bros	Magan Organics	Oakville Potatoes	San Remo	Woolworths Ltd
Bottega Rotolo	Golden North Pty Ltd	Magarey A A	Olive Grove Interior Supplies	Sanitarium Health Food Co	Woolworths Ltd
Bundaberg Beverages	Goodman Fielder - Other	Maggie Beer Products	On The Run	Scalzi Produce	- Distribution Centre
Cadell Training Centre	Goodman Fielder Bakeries	Manildra Group	Oriental Merchant	Schweppes Australia	Yatala Farm
Canstruction	Gumview Free Range Eggs	Mars Foods	P&G - Wella	Smiths Snackfoods Company	Zest / QFM Production
Cantarella Bros / Vittoria F&B	Haigh's Chocolates	Mars Snackfoods	Paschke Family Trust	Pepsico	
CEG Training Partnerships	Harrisville Orchards	Martin-Brower Australia Pty Ltd	Perfection Fresh		

### Financial and in-kind Donors

Adelaide Signs & Graphics	Combined Building & Construction	Harvey Foundation	Maughan Thiem Automotive Group	Royal Adelaide Show
Adelaide Zombie Walk	Specialists	High Rollers	Max Solutions	Rural City of Murray Bridge
Anton Violante	Combined Church Op Shop	Hunter Careers	Meredith Andrews Oakden	SAAB Australia Pty Ltd
ANZ Bank	Community Benefit SA	HWL Ebsworth Lawyers	Mildura Rural City Council	Scentre Group
Arrium Materials & Mining PTY Ltd	Creat-N-Trax	IKEA	Morialta Trust	Scott Group of Companies
Australian Executor Trustees	Crown Equipment	Inline Logistics	Mt Gambier & Districts Community	SE Fire Extinguisher Services
Charitable Trust	Dale Wylie Project Management	Integrated Waste Services	Bank Branch of Bendigo Bank	Sizetrans Transport
Australian Hotels Association, SA	Delivery Boyz	Jeffries Waste Services	Mt Gambier Probuc Conference	South Australian Produce Market
Baker's Delight Mount Gambier	Department for Communities and	Job Prospects	Murray Pest Control	St Peters Mission Guild
Barry & Shirley Maney and Family	Social Inclusion	John Hodgson Transport	Myadd	The Advertiser Foundation
Barry Maney Group	District Council of Loxton Waikerie	John Mason	One Steel Whyalla Steelworks	The Border Watch
Bayside Insurance Brokers	Drake's Foodland	Kellogs Australia	Oomiak Refrigeration	Thyne Reid Foundation
Berri Barmera Council	Electric Solutions	Keyinvest - Odd Fellows Foundation	Port Adelaide Football Club	Toll Group and Toll Priority
Berri Op Shop	EnergyAustralia	Lindsay Rural - Renmark	PriceWaterhouse Coopers	Trudy Betcher
BHP Billiton	Exchange Printers Mt Gambier	Lioness Club Mt Gambier	Primary Industries & Resources of SA	Vedderburn
BHP Billiton Employee Giving	Fay Fuller Foundation	Lions Club of Mount Gambier	Programmed	Veolia
Catering Aids	Fire Safe Services	Lions Club Blackwood	QBE	Versace Home Builders
Caudo Vineyard	Food SA	Lions Club Blair Athol	QBE Foundation	Visy
Centacare Catholic Family Services	Foodland Whyalla	Lions Club of Berri	Renmark Paringa Council	Wedderburn Weighing Equipment
Central Warehousing	Fresh & Clean, Whyalla	Lions Club of Glenside	RH Automotive, Whyalla	Westminster School
Chem Supply	Fuji Xerox	Lions Club of Hallett Cove	Riverland Steel	Whyalla City Council
Chep Australia	Gambier City Lions Club	Lions Club of Penola	Romeo's Foodland	WIN TV
CMV Foundation	Glendi Greek Festival	Lions Club of Prospect and Blair Athol	Rotary Club of Brighton	WIN TV Telethon
CMV Group	Great Motorcycle Trail	Lois Big Shed Barmera	Rotary Club of Kidman Park	Womad
Collins	Green Triangle Electronics	Locam	Rotary Club of Mount Gambier Lakes	Zero Waste SA
Collins Court Butcher	Harris Refrigerated Transport	Mai Wuru	Rotary Club of Mount Gambier West	

### Corporate Volunteers

Adelaide Combined Lodges	BT Financial Group	Department of Communities and	IKEA	SA Water
The University of Adelaide	Bupa	Social Inclusion	Imperial Tobacco	Status
AGL	Cappgemini	Deloitte	Lions	Telstra
Ajilon	CBA	Elders	NAB	Tend Financial Planning
Allianz	CGU/IAG	Elders QBE	PriceWaterhouse Coopers	The Body Shop
Anona Financial Planning	Coles	Finlaysons	Qantas	Treasury Wine Estates
ANZ	Cooper Energy	Flight Centre	QinetiQ	Westpac
AON	Cummins	Romeo's Foodland	Rabobank	Woolworths
BHP Billiton	Delivery Boyz	HP Enterprises	Rotary	Zero Waste SA